

Septin 9

Catalog Number: 21126

Gene Symbol: SEPT9

Description: Anti-Septin 9 Rabbit Polyclonal Antibody

Background: Septin-9 belongs to the septin family. It is essential for pseudopod protrusion, tumor cell migration and invasion.

Immunogen: A synthetic peptide from the internal region of Septin-9 isoform of human origin.

Tested Applications: ELISA, WB, IHC, IP

Recommended Dilutions:

ELISA: 1:1000-1:5000

WB: 1:100-1:1000

IHC: 1:50-1:100

Concentration: 0.2 mg/ml

Host: Rabbit

Clonality: Polyclonal

Purity: Purified from serum

Format: Liquid

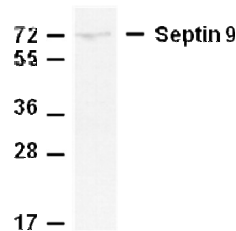
Preservative: No

Constituents: PBS (without Mg^{2+} and Ca^{2+}), pH7.4, 150 mM NaCl, 50% glycerol

Species Reactivity: Anti-Septin-9 antibody recognizes Septin-9 of vertebrates.

Storage Conditions: Store at $-20^{\circ}C$. Avoid freeze / thaw cycles

Western blot:



WB: anti-Septin 9 pAb

Whole-cell lysate of HEK293T cells was used for western blot with the polyclonal anti-Septin-9 antibody (Cat. # 21126).

FOR RESEARCH USE ONLY. NOT FOR DIAGNOSTIC APPLICATIONS